


PHONICS AT DOWNTON PRIMARY SCHOOL

Year 2

WHAT IS PHONICS?

- Method for teaching reading and writing.
 - Develop learners' awareness of the phonemes (sounds) and graphemes (spelling patterns) and their links.
- 

CODE BREAKING

- The written language is like a code.
- Knowing the sounds of the individual letters and how they sound when they are combined will help children decode words as they read.
- Know which words to use when they are writing words.

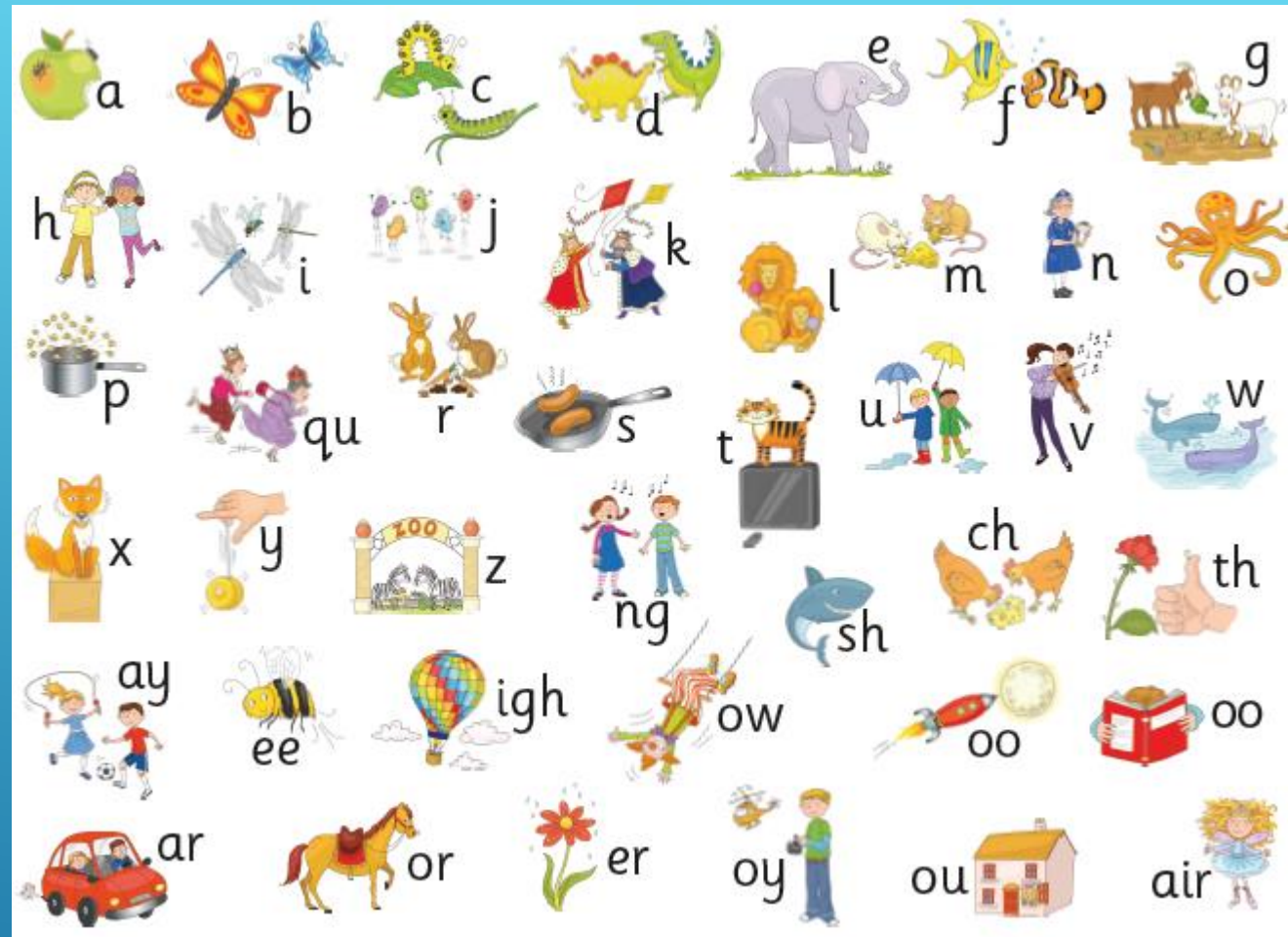
TEACHING PHONICS AT DOWNTON PRIMARY

- There are 26 letters in the English alphabet.
- There are 44 phonemes (sounds) in the English language.
- There are about 250 graphemes!
- For Example – how many ways can we write the /k/ sound?

c, k, ck, ch


SONG OF SOUNDS

- Starts in Reception
- Progresses through Year 1
- Supports children in Y2 as they move onto spelling rules



SONG OF SOUNDS IN RECEPTION


SONG OF SOUNDS IN YEAR 1

- Children are taught 27 new graphemes
 - 10 phonemes
- 
- A decorative graphic consisting of several parallel white lines of varying lengths, slanted upwards from left to right, located in the bottom right corner of the slide.




SONG OF SOUNDS IN YEAR 1

HOW DO WE TEACH IT?

- Multi-sensory
 - Sing the song, with actions, use pictures
 - Learn 1 sound each week with its alternative graphemes
- 
- A decorative graphic consisting of several parallel white lines of varying lengths, slanted upwards from left to right, located in the bottom right corner of the slide.


WHERE IS ALL THIS LEADING?

- Confident readers who can decode (sound out) and blend words
 - Confident writers who can use phonics to make plausible choices when spelling words
- 
- A decorative graphic consisting of several parallel white lines of varying lengths, slanted diagonally from the bottom right towards the top right, set against a blue gradient background.

THE PHONICS SCREENING CHECK

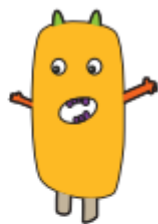
- Usually at the end of year 1 (June)
 - Now in the Autumn term
- 
- A decorative graphic consisting of several parallel white lines of varying lengths, slanted upwards from left to right, located in the bottom right corner of the slide.

WHAT DOES IT LOOK LIKE?

- Individual with class teacher
 - 40 words
 - Pseudo (alien names) and real words
 - Not timed
 - Plenty of practice!
- 
- A decorative graphic consisting of several parallel white lines of varying lengths, slanted diagonally from the bottom right towards the top right, set against the blue background.

TEST

reb



wup



jub



eps



delay

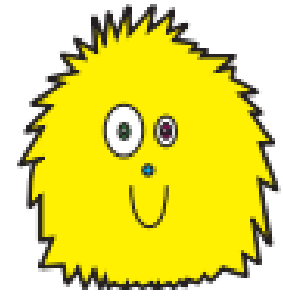
modern

saucers

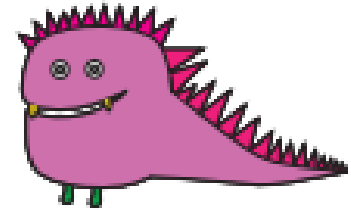
charming

SOUND BUTTONS

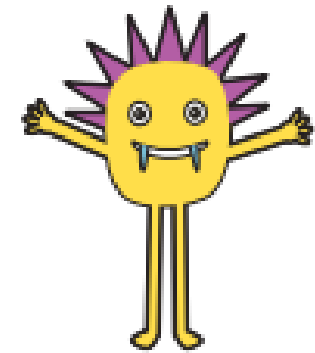
braint



scrid



splote



WHAT ARE WE DOING IN SCHOOL?

- Continuing to teach, revise and practice all the phonemes and graphemes learnt since Year R
- Reading regularly
- Continuing to model sounding out and blending when we read and write in class
- Encouraging the children to use their Sound Mats and phonics knowledge in all their reading and writing activities
- Continuing to make Phonics fun!

WHAT CAN YOU DO TO HELP YOUR CHILD?

- Continue to read every day with your child
- Talk about the sounds and help them to use their phonics to sound out and blend new words
- Play games
- Use any supporting resources or games sent home with your child

WEBSITES & RESOURCES

[PhonicsPlay – Resources](#)

(Make sure you click on 'phase 5' when setting up the games

<https://www.teachyourmonstertoread.com/>

<https://www.topmarks.co.uk/Search.aspx?q=phonics>

